

FACT SHEET: ADVANTECH[®] SUBFLOOR ASSEMBLY

For a subfloor assembly that meets your highest standard, rely on the innovation and performance of the AdvanTech[™] Subfloor Assembly. Combine the strength and moisture resistance of AdvanTech[®] subflooring with the powerful polyurethane bond of AdvanTech[™] subfloor adhesive for a panel-to-joist connection so strong you won't hear a squeak - guaranteed¹.

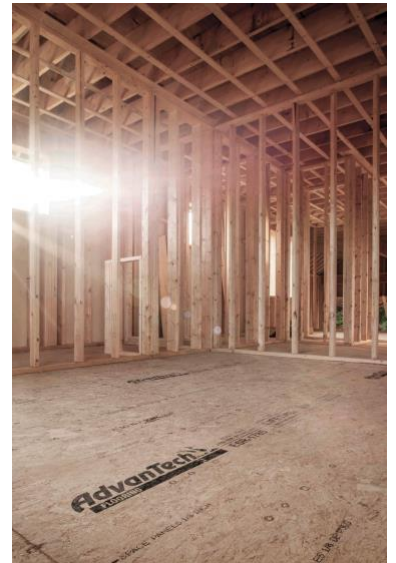
AdvanTech subflooring is a brand builders have trusted for more than 20 years to combat the harshest jobsite conditions. Pair with easy-to-apply AdvanTech[™] subfloor adhesive for a quick installation and durability you can count on to resist pops, squeaks and swelling.

For the FLAT OUT BEST[™] in quiet, stiff floors, choose the AdvanTech[™] Subfloor Assembly.

Product benefits of AdvanTech subfloor adhesive and AdvanTech subfloor panels include:

- A moisture-curing panel-to-joist bond ideal for dry, frozen or wet lumber
- A moisture-resistant, stiff subflooring base that stays flat, even after jobsite exposure, thanks to advanced resin technology throughout AdvanTech[®] panels
- A smooth installation from the gun-applied, foam-to-gel adhesive application to the tongue and groove panel with pre-printed fastening guide installation
- A heavy-duty, gap-filling bond to a high-performance, fastener-gripping panel work together to reduce the chance for squeaks

For more information on AdvanTech[®] products visit AdvanTechQuiet.com.



¹ According to Evaluation Service Report published by the International Code Council's Evaluation Services in [ESR-1785](https://www.iccs.org/evaluation-services/ESR-1785).

² Limitations and restrictions apply. Visit AdvanTechPerforms.com/ResidentialWarranty for warranty and No-Sanding Guarantee details.

³ *Builder* magazine annual [Brand Use Study](https://www.builder.com/brand-use-study), 2002 – 2016, OSB category.