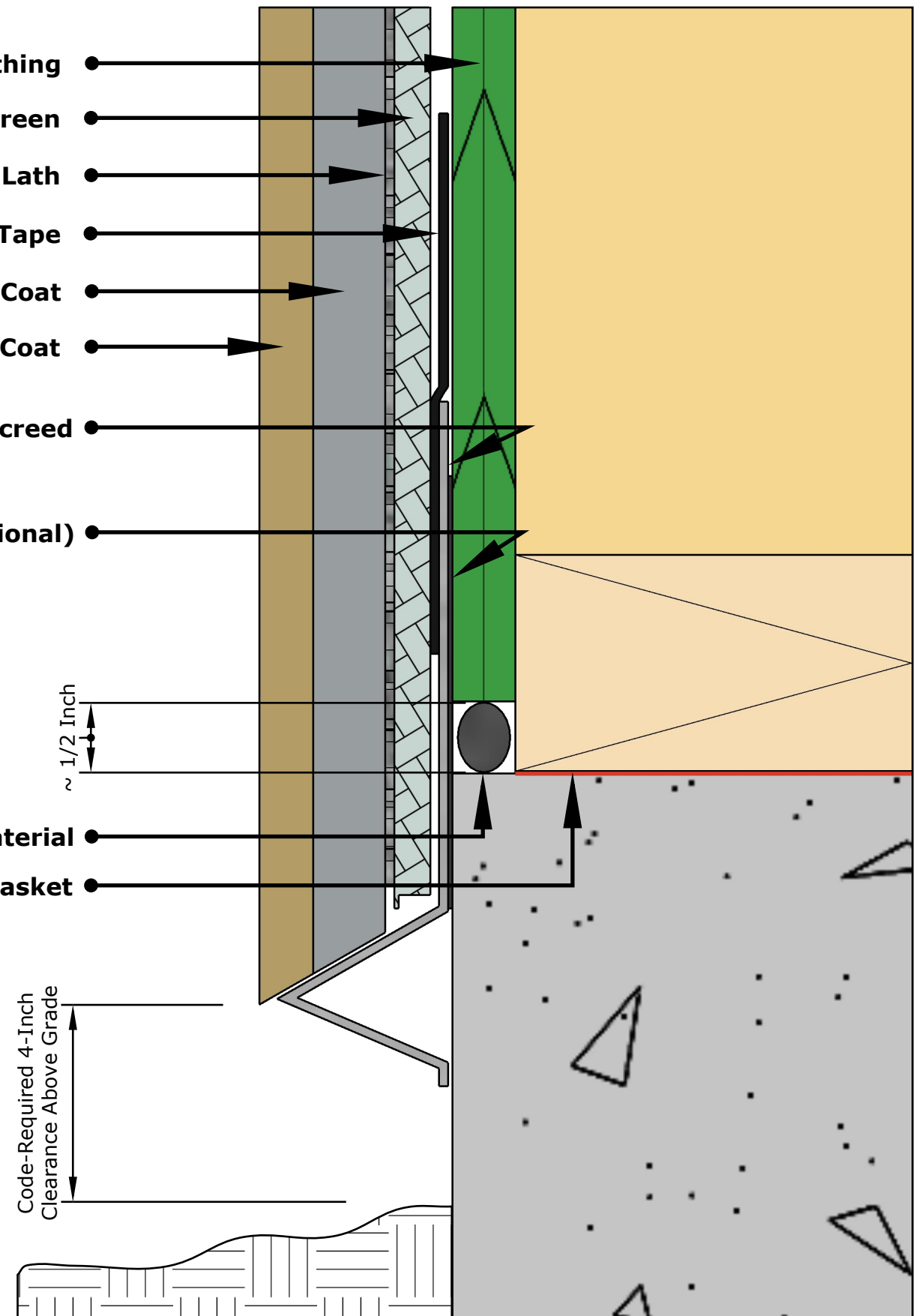
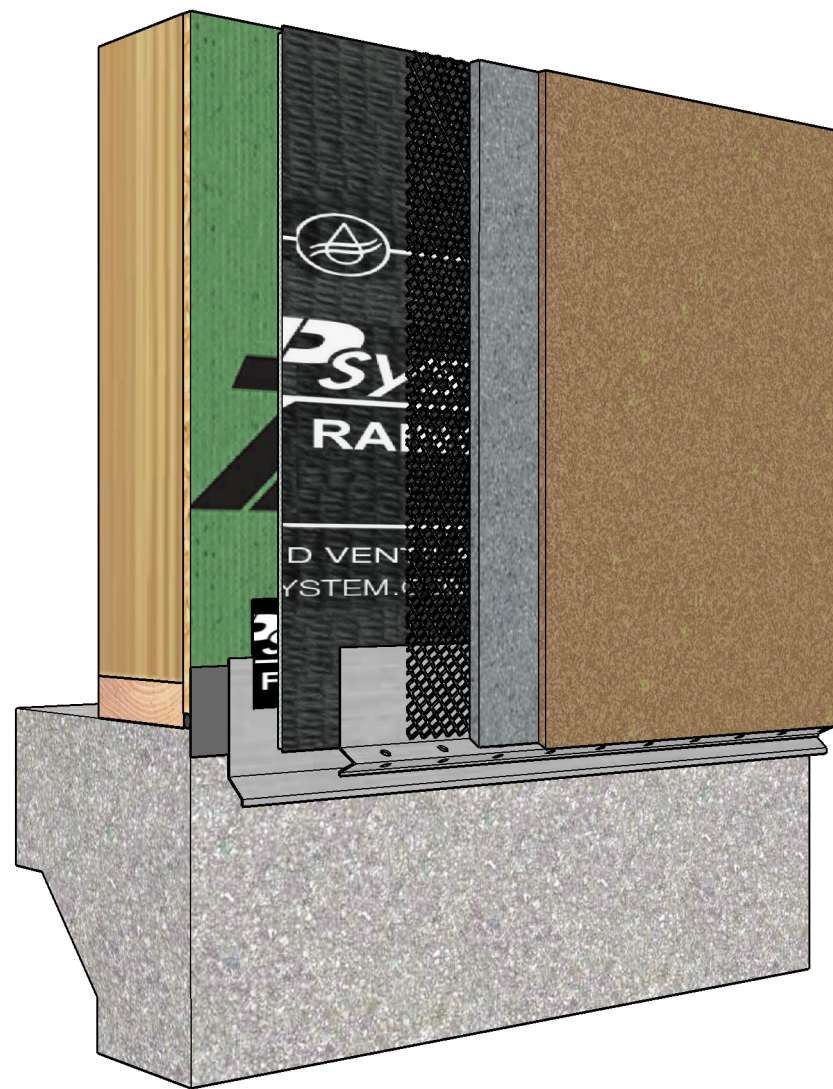


- * Tape all ZIP System sheathing panel seams and roll the tape.
- * Tape all vertical seams of ZIP System rainscreen.
- * (Optional) Install a bug guard along the bottom of ZIP System rainscreen.
- * Trim the 3-inch selvage along the bottom course of ZIP System rainscreen.
- * The weep screed or J-channel should be sized to accommodate both the stucco and the ZIP System rainscreen (if applicable).
- * Confirm the weep screed or J-channel are perforated to allow drainage.

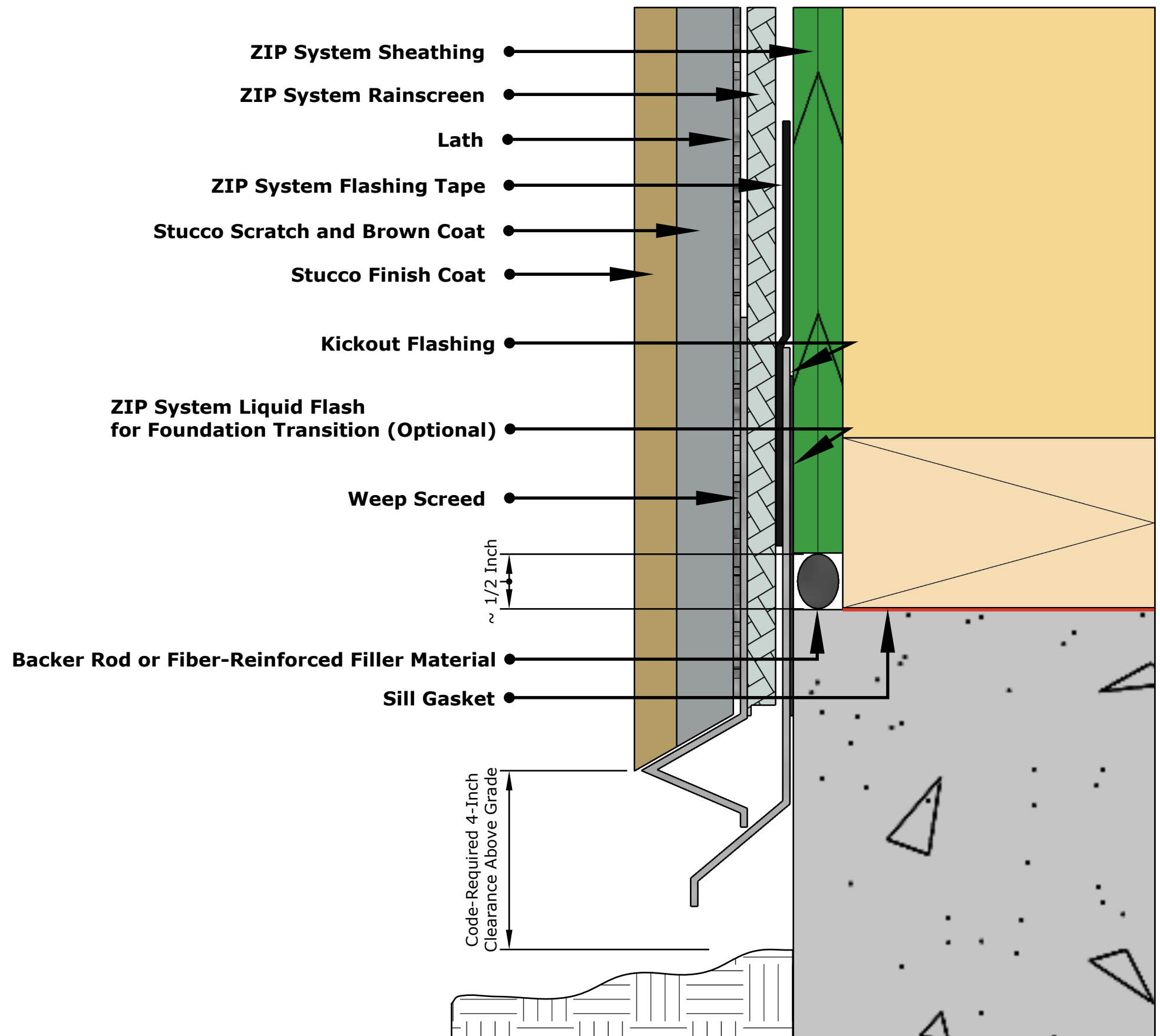
- ZIP System Sheathing
- ZIP System Rainscreen
- Lath
- ZIP System Flashing Tape
- Stucco Scratch and Brown Coat
- Stucco Finish Coat
- Weep Screed
- ZIP System Liquid Flash for Foundation Transition (Optional)
- Backer Rod or Fiber-Reinforced Filler Material
- Sill Gasket



-BOTTOM OF WALL FLASHING DETAIL WITH STUCCO- ZIP SYSTEM RAINSCREEN OVER WEEP SCREED



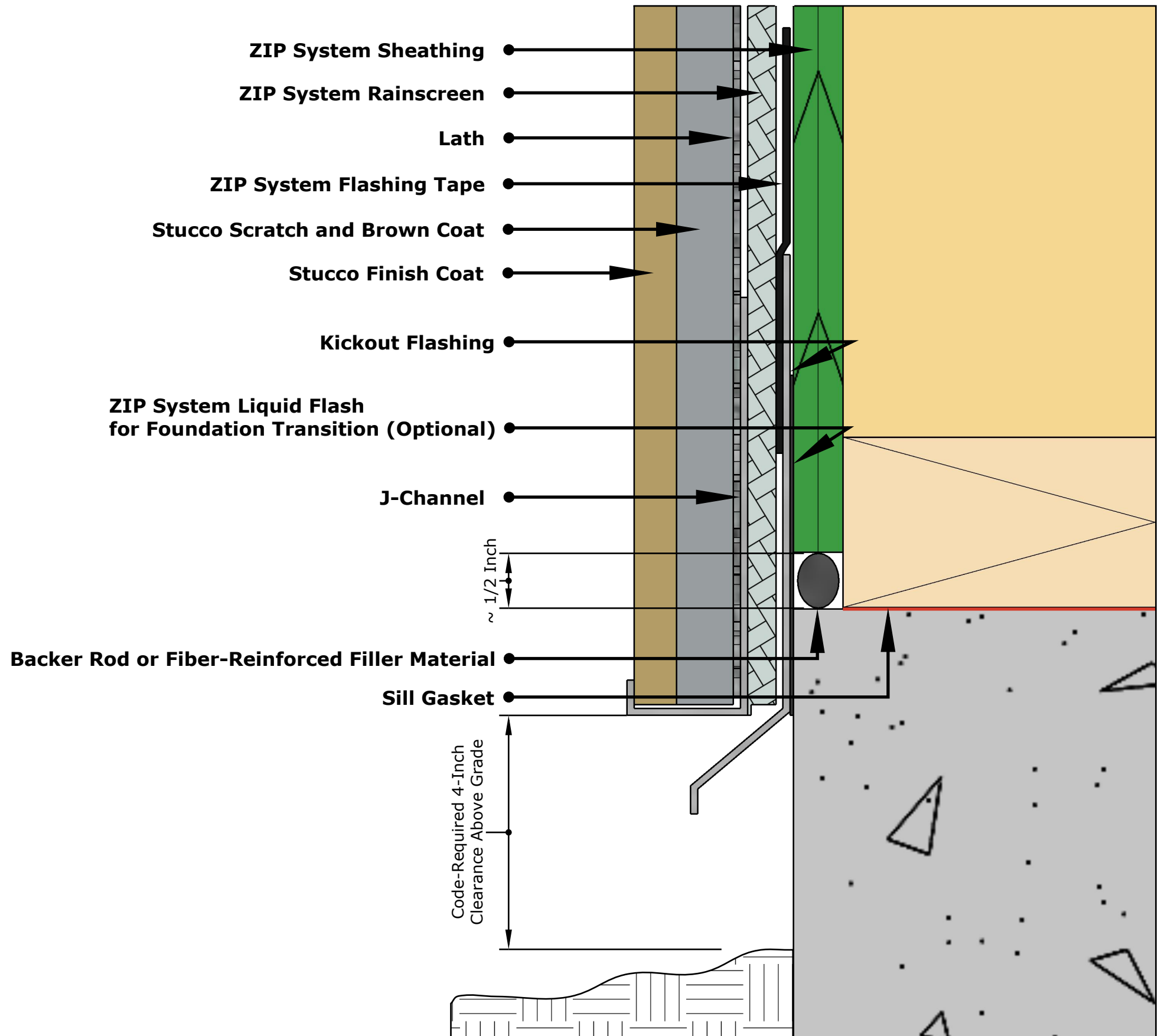
- * Tape all ZIP System sheathing panel seams and roll the tape.
- * Tape all vertical seams of ZIP System rainscreen.
- * (Optional) Install a bug guard along the bottom of ZIP System rainscreen.
- * Trim the 3-inch selvage along the bottom course of ZIP System rainscreen.
- *The weep screed or J-channel should be sized to accommodate both the stucco and the ZIP System rainscreen (if applicable).
- *Confirm the weep screed or J-channel are perforated to allow drainage.



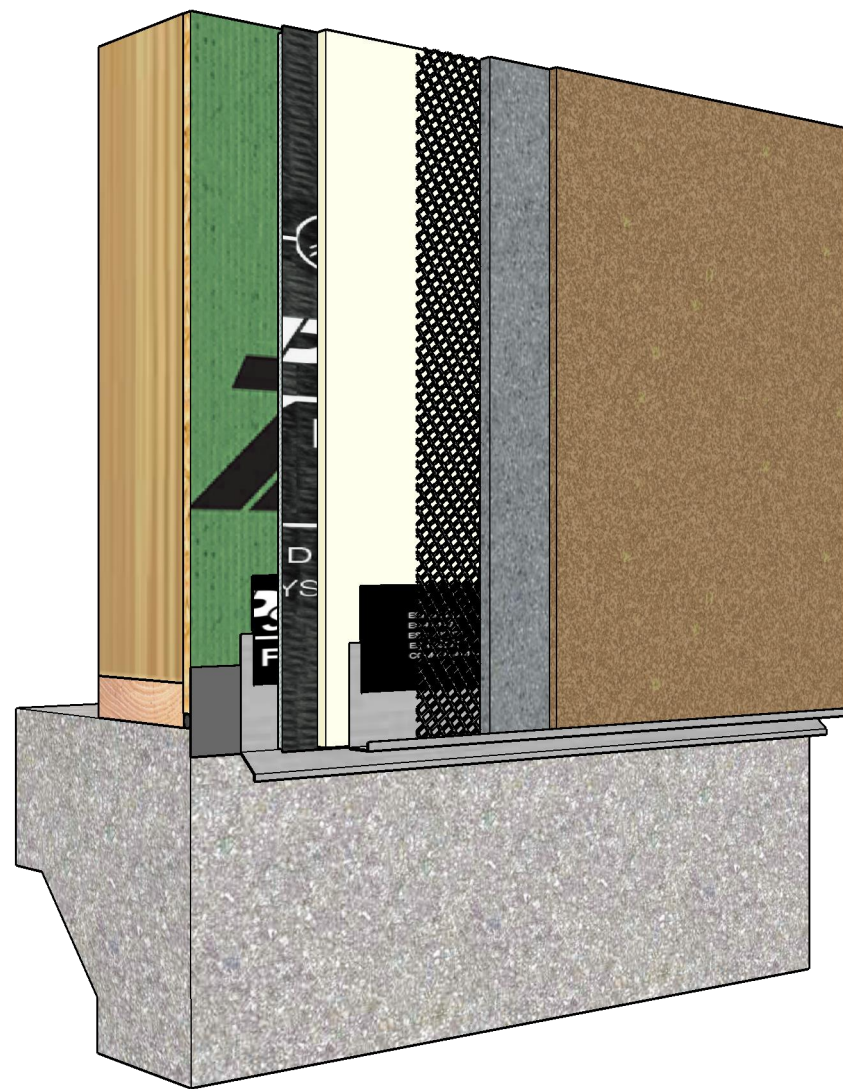
-BOTTOM OF WALL FLASHING DETAIL WITH STUCCO- ZIP SYSTEM RAINSCREEN UNDER WEEP SCREED



- * Tape all ZIP System sheathing panel seams and roll the tape.
- * Tape all vertical seams of ZIP System rainscreen.
- * (Optional) Install a bug guard along the bottom of ZIP System rainscreen.
- * Trim the 3-inch selvage along the bottom course of ZIP System rainscreen.
- *The weep screed or J-channel should be sized to accommodate both the stucco and the ZIP System rainscreen (if applicable).
- *Confirm the weep screed or J-channel are perforated to allow drainage.



-BOTTOM OF WALL FLASHING DETAIL WITH STUCCO- ZIP SYSTEM RAINSCREEN UNDER J-CHANNEL



- ZIP System Sheathing
- Exterior Continuous Insulation
- ZIP System Rainscreen
- Lath
- ZIP System Flashing Tape for Kickout Flashing
- ZIP System Flashing Tape for Rigid Foam (Optional)
- Kickout Flashing
- Stucco Scratch and Brown Coat
- Stucco Finish Coat
- ZIP System Liquid Flash for Foundation Transition (Optional)
- J-Channel
- Backer Rod or Fiber-Reinforced Filler Material
- Sill Gasket

~ 1/2 Inch

Code-Required 4-Inch Clearance Above Grade

- * Tape all ZIP System sheathing panel seams and roll the tape.
- * Tape all vertical seams of ZIP System rainscreen.
- * (Optional) Install a bug guard along the bottom of ZIP System rainscreen.
- * Trim the 3-inch selvage along the bottom course of ZIP System rainscreen.
- * The weep screed or J-channel should be sized to accommodate both the stucco and the ZIP System rainscreen (if applicable).
- * Confirm the weep screed or J-channel are perforated to allow drainage.

-BOTTOM OF WALL FLASHING DETAIL WITH STUCCO- ZIP SYSTEM RAINSCREEN UNDER RIGID FOAM

February 21, 2024

Page 4 of 4

ZIPsystem™
RAINSCREEN

These construction details are provided to assist in the installation of ZIP System® product(s) and may not apply to every situation. Manufacturer accepts no responsibility or liability for the use of these or other construction details.