

- ZIP System R-sheathing
- ZIP System Rainscreen
- ZIP System Flashing Tape
- Lath
- Stucco Scratch and Brown Coat
- Stucco Finish Coat
- Weep Screed
- ZIP System Liquid Flash for Foundation Transition (Optional)

- Backer Rod or Fiber-Reinforced Filler Material
- Sill Gasket

~ 1/2 Inch

Code-Required 4-Inch Clearance Above Grade

- \* Tape all ZIP System sheathing panel seams.
- \* Tape all vertical seams of ZIP System rainscreen.
- \* (Optional) Install a bug guard along the bottom of ZIP System rainscreen.
- \* Trim the 3-inch selvage along the bottom course of ZIP System rainscreen.
- \* The weep screed or J-channel should be sized to accommodate both the stucco and the ZIP System rainscreen (if applicable).
- \* Confirm the weep screed or J-channel are perforated to allow drainage.
- \* Roll the tape.

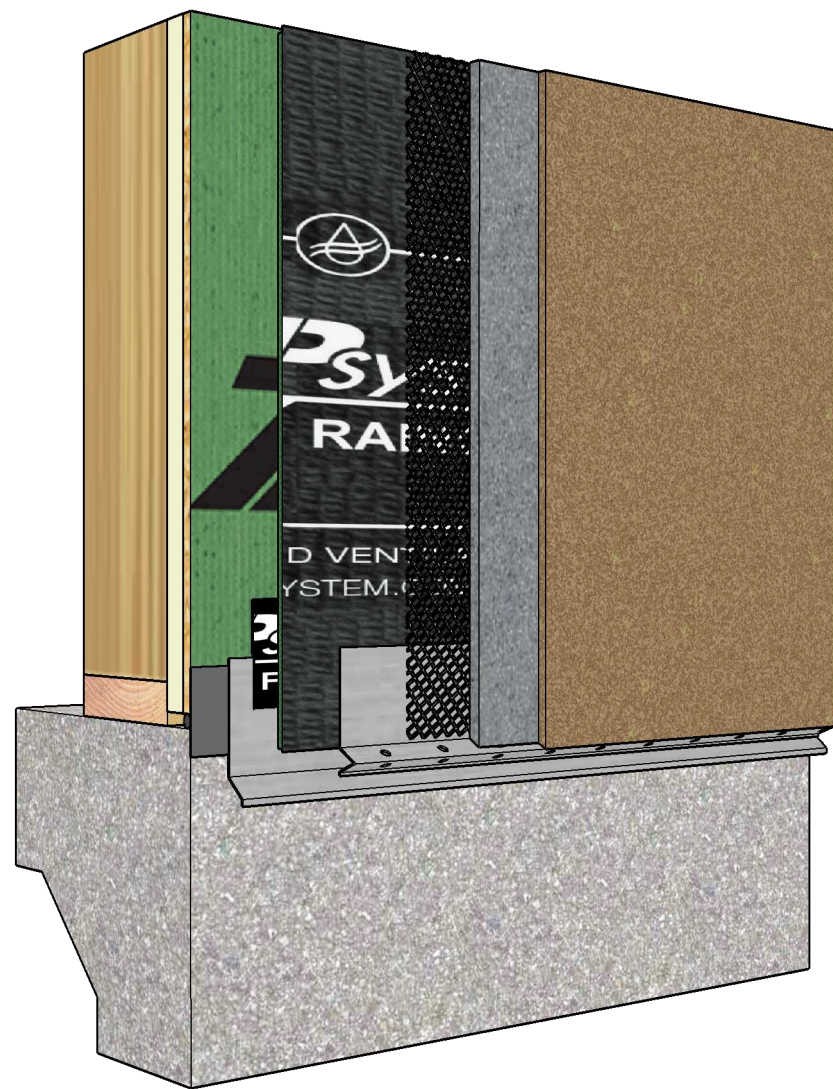
## -BOTTOM OF WALL FLASHING DETAIL- ZIP SYSTEM RAINSCREEN OVER WEEP SCREED WITH ZIP SYSTEM R-SHEATHING

December 4, 2023

Page 1 of 3

**ZIP**system™  
RAINSCREEN

These construction details are provided to assist in the installation of ZIP System® product(s) and may not apply to every situation. Manufacturer accepts no responsibility or liability for the use of these or other construction details.



ZIP System R-sheathing

ZIP System Rainscreen

ZIP System Flashing Tape for Kickout Flashing

Lath

Stucco Scratch and Brown Coat

Stucco Finish Coat

Kickout Flashing

ZIP System Liquid Flash  
for Foundation Transition (Optional)

Weep Screed

Backer Rod or Fiber-Reinforced Filler Material

Sill Gasket

~ 1/2 Inch

Code-Required 4-Inch  
Clearance Above Grade

- \* Tape all ZIP System sheathing panel seams.
- \* Tape all vertical seams of ZIP System rainscreen.
- \* (Optional) Install a bug guard along the bottom of ZIP System rainscreen.
- \* Trim the 3-inch selvage along the bottom course of ZIP System rainscreen.
- \* The weep screed or J-channel should be sized to accommodate both the stucco and the ZIP System rainscreen (if applicable).
- \* Confirm the weep screed or J-channel are perforated to allow drainage.
- \* Roll the tape.

## -BOTTOM OF WALL FLASHING DETAIL- ZIP SYSTEM RAINSCREEN UNDER WEEP SCREED WITH ZIP SYSTEM R-SHEATHING

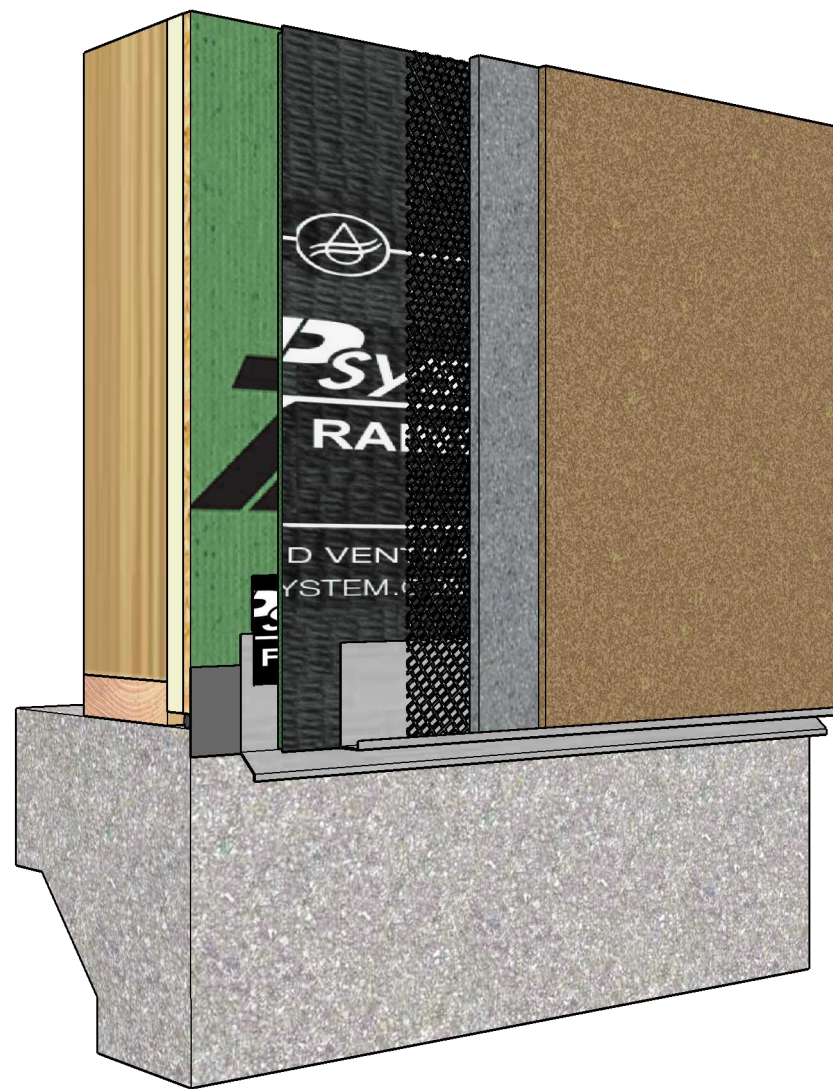
December 4, 2023

Page 2 of 3

**ZIP**system<sup>TM</sup>  
RAINSCREEN

These construction details are provided to assist in the installation of ZIP System® product(s) and may not apply to every situation. Manufacturer accepts no responsibility or liability for the use of these or other construction details.





ZIP System R-sheathing

ZIP System Rainscreen

ZIP System Flashing Tape for Kickout Flashing

Lath

Stucco Scratch and Brown Coat

Stucco Finish Coat

Kickout Flashing

ZIP System Liquid Flash  
for Foundation Transition (Optional)

J-Channel

~ 1/2 Inch

Backer Rod or Fiber-Reinforced Filler Material

Sill Gasket

Code-Required 4-Inch  
Clearance Above Grade

- \* Tape all ZIP System sheathing panel seams.
- \* Tape all vertical seams of ZIP System rainscreen.
- \* (Optional) Install a bug guard along the bottom of ZIP System rainscreen.
- \* Trim the 3-inch selvage along the bottom course of ZIP System rainscreen.
- \* The weep screed or J-channel should be sized to accommodate both the stucco and the ZIP System rainscreen (if applicable).
- \* Confirm the weep screed or J-channel are perforated to allow drainage.
- \* Roll the tape.

## -BOTTOM OF WALL FLASHING DETAIL- ZIP SYSTEM RAINSCREEN UNDER J-CHANNEL WITH ZIP SYSTEM R-SHEATHING

December 4, 2023

Page 3 of 3

**ZIP**system<sup>TM</sup>  
RAINSCREEN

These construction details are provided to assist in the installation of ZIP System® product(s) and may not apply to every situation. Manufacturer accepts no responsibility or liability for the use of these or other construction details.