

**BXUV.V318**  
**Fire-resistance Ratings - ANSI/UL 263**[Page Bottom](#)**BXUV - Fire Resistance Ratings - ANSI/UL 263****BXUV7 - Fire Resistance Ratings - CAN/ULC-S101 Certified for Canada**[See General Information for Fire-resistance Ratings - ANSI/UL 263](#)[See General Information for Fire Resistance Ratings - CAN/ULC-S101 Certified for Canada](#)**Design No. V318**

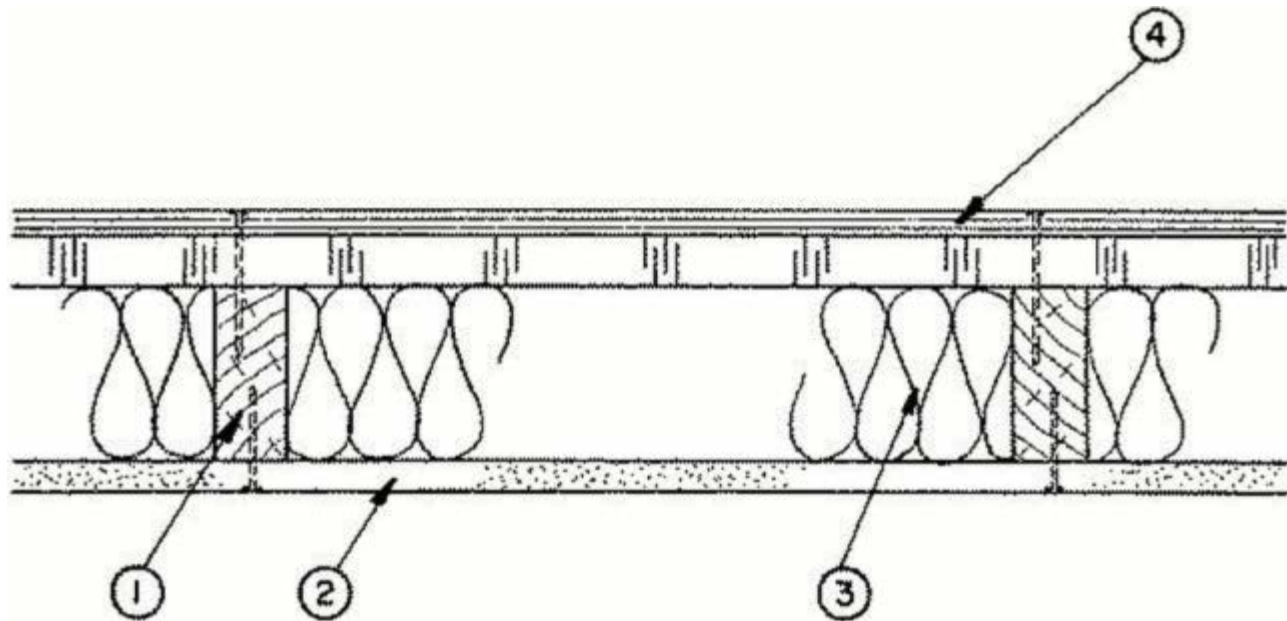
June 13, 2017

**(Exposed to Fire on Interior Face Only)****Bearing Wall Rating — 1 Hr.**

This design was evaluated using a load design method other than the Limit States Design Method (e.g., Working Stress Design Method). For jurisdictions employing the Limit States Design Method, such as Canada, a load restriction factor shall be used — See Guide [BXUV](#) or [BXUV7](#)

\* Indicates such products shall bear the UL or cUL Certification Mark for jurisdictions employing the UL or cUL Certification (such as Canada), respectively.

Exterior



Interior

1. **Wood Studs** — Nom 2 by 6 in., spaced 16 in. OC.

2. **Gypsum Board\*** — Any 5/8 in. thick UL Classified Gypsum Board that is eligible for use in Design Nos. L501, G512 or U305. Nom. 5/8 in. thick (min) 4 ft. wide bearing the UL Classification Marking for Fire Resistance applied vertically. Attached to studs with 6d cement coated nails spaced 7 in. OC at the edges and in the field. Vertical joints located over studs. Joints covered with paper tape and joint compound. Nail heads covered with joint compound.

**ACADIA DRYWALL SUPPLIES LTD** ([View Classification](#)) — CKNX.R25370

**AMERICAN GYPSUM CO** ([View Classification](#)) — CKNX.R14196

**BEIJING NEW BUILDING MATERIALS PUBLIC LTD CO** ([View Classification](#)) — CKNX.R19374

**CERTAINTED GYPSUM INC** ([View Classification](#)) — CKNX.R3660

**CGC INC** ([View Classification](#)) — CKNX.R19751

**CONTINENTAL BUILDING PRODUCTS OPERATING CO, L L C** ([View Classification](#)) — CKNX.R18482

**GEORGIA-PACIFIC GYPSUM L L C** ([View Classification](#)) — CKNX.R2717

**GEORGIA-PACIFIC GYPSUM L L C** ([View Classification](#)) — CKNX.R6937

**LOADMASTER SYSTEMS INC** ([View Classification](#)) — CKNX.R11809

**NATIONAL GYPSUM CO** ([View Classification](#)) — CKNX.R3501

**PABCO BUILDING PRODUCTS L L C, DBA PABCO GYPSUM** ([View Classification](#)) — CKNX.R7094

**PANEL REY S A** ([View Classification](#)) — CKNX.R21796

**SIAM GYPSUM INDUSTRY (SARABURI) CO LTD** ([View Classification](#)) — CKNX.R19262

**THAI GYPSUM PRODUCTS PCL** ([View Classification](#)) — CKNX.R27517

**UNITED STATES GYPSUM CO** ([View Classification](#)) — CKNX.R1319

**USG MEXICO S A DE C V** ([View Classification](#)) — CKNX.R16089

3. **Fiber, Sprayed\*** — Spray applied granulated mineral fiber material. The fiber is applied with adhesive, at a minimum density of 4.0 pcf, to completely fill the enclosed cavity in accordance with the application instructions supplied with the product. See **Fiber, Sprayed** (CCAZ).

**AMERICAN ROCKWOOL MANUFACTURING, LLC** — Type Rockwool Premium Plus

4. **Building Units\*** — Consisting of 7/16-in. thick PS-2 rated oriented strand board (OSB) as cover board bonded to rigid 1/2 in. to 2 in. thick polyisocyanurate insulation, installed vertically with vertical joints located over studs. Fastened to studs with min. 10d galvanized nails, 2-7/8 in. long, spaced 6 in. OC at edges and 12 in. OC in the field. Length of nails to be such that they engage with studs minimum 1-3/8 in.

**HUBER ENGINEERED WOODS L L C** — ZIP System ® R Sheathing

\* Indicates such products shall bear the UL or cUL Certification Mark for jurisdictions employing the UL or cUL Certification (such as Canada), respectively.

[Questions?](#)[Print this page](#)[Terms of Use](#)[Page Top](#)

© 2017 UL LLC

The appearance of a company's name or product in this database does not in itself assure that products so identified have been manufactured under UL's Follow-Up Service. Only those products bearing the UL Mark should be considered to be Certified and covered under UL's Follow-Up Service. Always look for the Mark on the product.

UL permits the reproduction of the material contained in the Online Certification Directory subject to the following conditions: 1. The Guide Information, Assemblies, Constructions, Designs, Systems, and/or Certifications (files) must be presented in their entirety and in a non-misleading manner, without any manipulation of the data (or drawings). 2. The statement "Reprinted from the Online Certifications Directory with permission from UL" must appear adjacent to the extracted material. In addition, the reprinted material must include a copyright notice in the following format: "© 2017 UL LLC".