

**Design No. V303
 BXUV.V303
 Fire Resistance Ratings - ANSI/UL 263**

[Page Bottom](#)

Design/System/Construction/Assembly Usage Disclaimer

- Authorities Having Jurisdiction should be consulted in all cases as to the particular requirements covering the installation and use of UL Listed or Classified products, equipment, system, devices, and materials.
- Authorities Having Jurisdiction should be consulted before construction.
- Fire resistance assemblies and products are developed by the design submitter and have been investigated by UL for compliance with applicable requirements. The published information cannot always address every construction nuance encountered in the field.
- When field issues arise, it is recommended the first contact for assistance be the technical service staff provided by the product manufacturer noted for the design. Users of fire resistance assemblies are advised to consult the general Guide Information for each product category and each group of assemblies. The Guide Information includes specifics concerning alternate materials and alternate methods of construction.
- Only products which bear UL's Mark are considered as Classified, Listed, or Recognized.

Fire Resistance Ratings - ANSI/UL 263

[See General Information for Fire Resistance Ratings - ANSI/UL 263](#)

Design No. V303

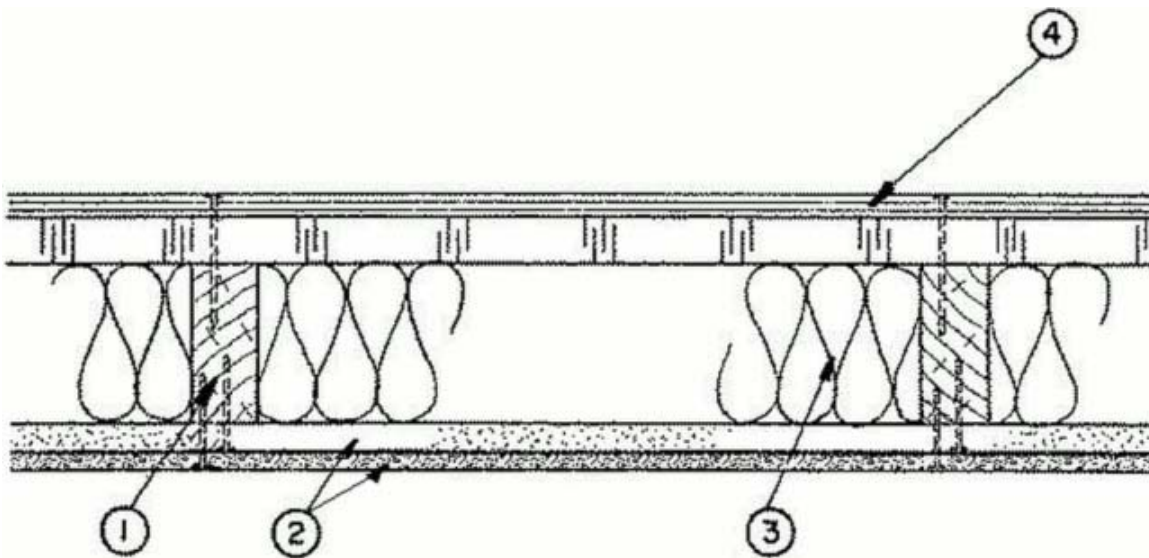
December 01, 2011

(Exposed to Fire on Interior Face Only)

Bearing Wall Rating — 1 HR.

Load Restricted for Canadian Applications — See Guide [BXUV7](#)

Exterior



Interior

1. **Wood Studs** — Nom 2 by 4 in., spaced 16 in. OC.

2. **Gypsum Board*** — 5/8 in. thick, two layers applied either horizontally or vertically. Inner layer attached to studs with 6d nails, 1-7/8 in. long, spaced 6 in. OC. Outer layer attached to studs over inner layer with 8d nails, 2-3/8 in. long spaced 8 in. OC. Vertical joints located over studs. All joints in face layers staggered with joints in base layers. Exposed joints covered with paper tape and joint compound. Nail heads covered with joint compound.

Any UL Classified Gypsum Board that is eligible for use in Design Nos. L501, G512 or U305. See **Gypsum Board** (CKNX) Category for names of Classified companies.

3. **Batts and Blankets*** — (Optional) - Glass fiber or mineral wool batts placed in cavity of wall.

See **Batts and Blankets** (BZJZ) Category for names of Classified companies.

3A. **Fiber, Sprayed*** — As an alternate to Batts and Blankets (Item 3) — Spray applied cellulose material. The fiber is applied with water to completely fill the enclosed cavity in accordance with the application instructions supplied with the product. Nominal dry density of 3.0 lb/ft³. Alternate application method: The fiber is applied with U.S. Greenfiber LLC Type AD100 hot melt adhesive at a nominal ratio of one part adhesive to 6.6 parts fiber to completely fill the enclosed cavity in accordance with the application instructions supplied with the product. Nominal dry density of 2.5 lb/ft³.

U S GREENFIBER L L C — Cocoon2 Stabilized or Cocoon-FRM (Fire Rated Material)

3B. **Fiber, Sprayed*** — As an alternate to Batts and Blankets (Item 3) - Spray applied cellulose fiber. The fiber is applied with water to completely fill the enclosed cavity in accordance with the application instructions supplied with the product. The minimum dry density shall be 4.30 lbs/ft³.

INTERNATIONAL CELLULOSE CORP — Celbar-RL

4. **Building Units*** — Consisting of 7/16 in. thick PS-2 rated oriented strand board (OSB) as cover board bonded to rigid polyisocyanurate insulation.

Fastened to studs with min. 10d galvanized nails, 2-7/8-in long, spaced 6 in. OC at edges and 12 in. OC in the field.

HUBER ENGINEERED WOODS L L C — ZIP System ® Sheathing

*Bearing the UL Classification Mark

Last Updated on 2011-12-01

[Questions?](#)

[Print this page](#)

[Notice of Disclaimer](#)

[Page Top](#)

© 2012 UL LLC

The appearance of a company's name or product in this database does not in itself assure that products so identified have been manufactured under UL's Follow-Up Service. Only those products bearing the UL Mark should be considered to be Listed and covered under UL's Follow-Up Service. Always look for the Mark on the product.

UL permits the reproduction of the material contained in the Online Certification Directory subject to the following conditions: 1. The Guide Information, Designs and/or Listings (files) must be presented in their entirety and in a non-misleading manner, without any manipulation of the data (or drawings). 2. The statement "Reprinted from the Online Certifications Directory with permission from UL" must appear adjacent to the extracted material. In addition, the reprinted material must include a copyright notice in the following format: "© 2012 UL LLC".