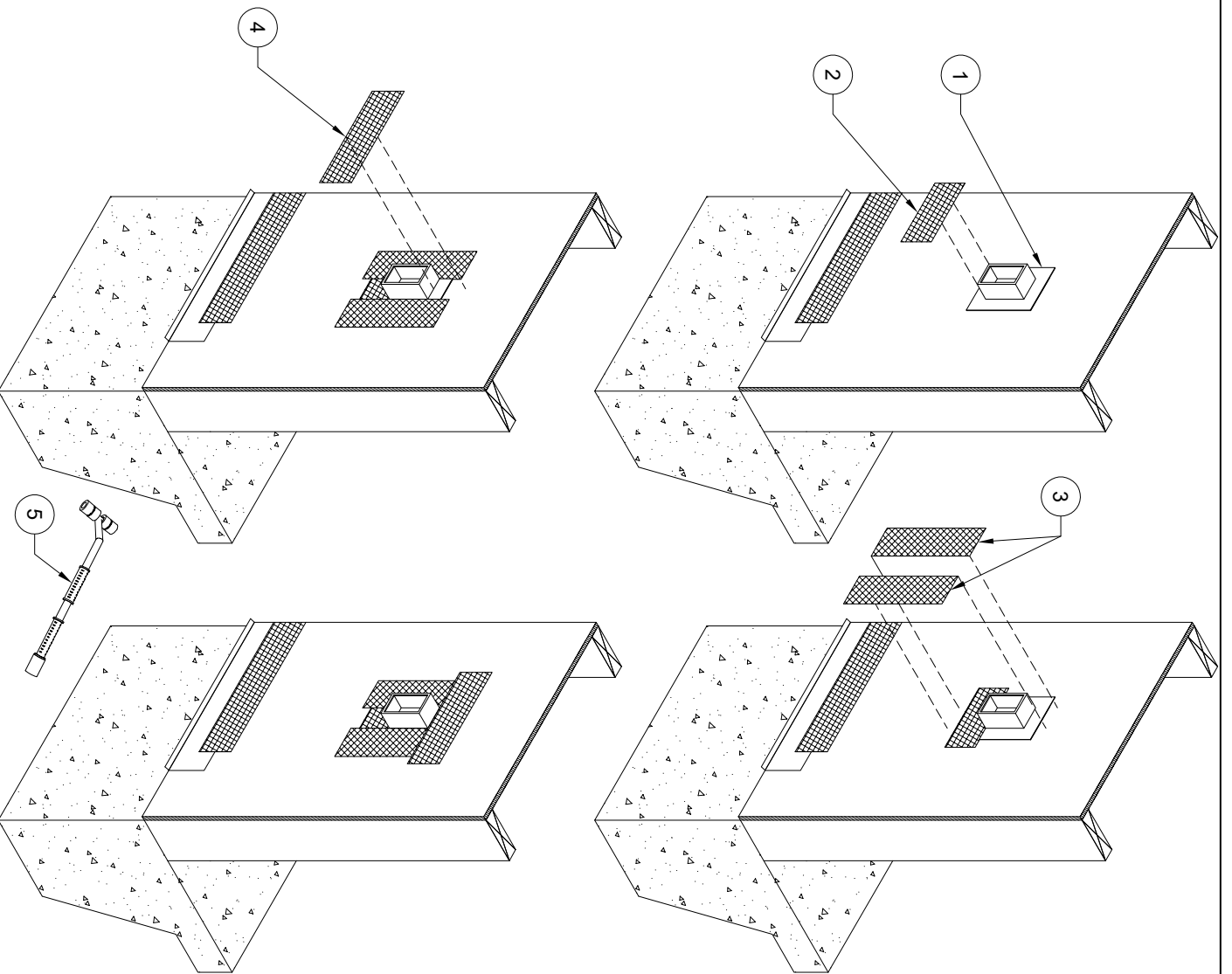


1. ELECTRICAL BOX OR SIMILAR PENETRATION. FOR NON-FLANGED ELECTRICAL BOX PENETRATIONS PLEASE SEE DETAIL "ZIP SYSTEM® SHEATHING AT BEAM PENETRATION"
2. ZIP SYSTEM™ TAPE OR ADHESIVE BACKED FLASHING MEETING AAMA 711 OR AC148 INSTALLED ALONG THE BOTTOM FLANGE.
3. ZIP SYSTEM™ TAPE OR ADHESIVE BACKED FLASHING MEETING AAMA 711 OR AC148 INSTALLED AT THE JAMBS. SHOULD EXTEND 1-INCH BELOW THE BOTTOM FLANGE TAPE AND 1-INCH ABOVE THE TOP FLANGE.
4. ZIP SYSTEM™ TAPE OR ADHESIVE BACKED FLASHING MEETING AAMA 711 OR AC148 INSTALL ALONG THE HEAD FLANGE. THE TAPE SHOULD EXTEND BEYOND THE JAMB PIECE BY A MINIMUM 1-INCH ON EACH SIDE.
5. ZIP SYSTEM™ ROLLER. ROLL ALL TAPE.



NTS