



ZIP SYSTEM® WALL SHEATHING WITH VINYL / WOOD / FIBER CEMENT AT STANDARD FIELD OF WALL

01A

WALL ASSEMBLY
VINYL/WOOD/FIBER CEMENT SIDING
(INSTALLED IN ACCORDANCE WITH
CLADDING MANUFACTURER'S
INSTALLATION RECOMMENDATIONS)
ZIP SYSTEM® WALL SHEATHING
WOOD OR LT. GA. METAL STUDS

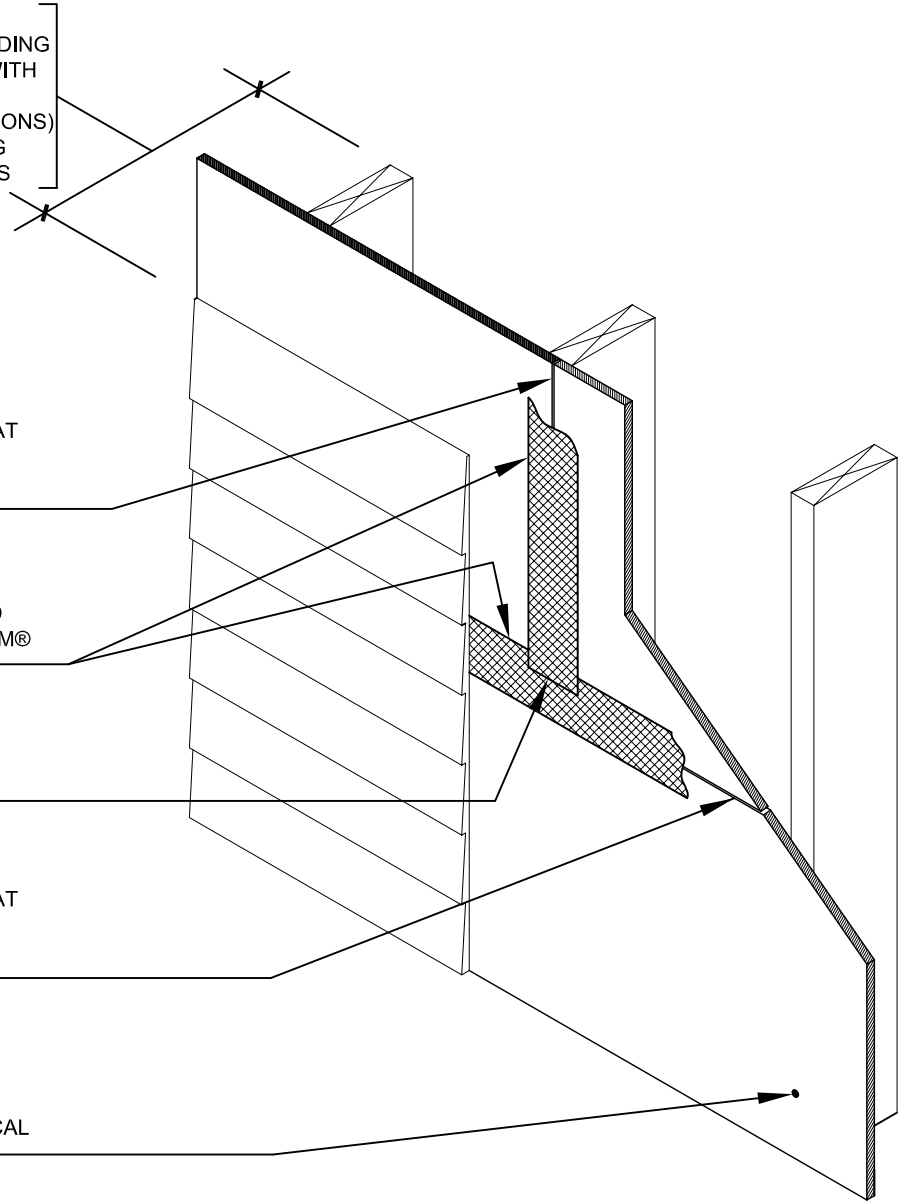
1/8-INCH GAP RECOMMENDED AT
PANEL EDGES UNLESS
OTHERWISE PROVIDED BY
MACHINED PROFILED EDGES

ZIP SYSTEM® TAPE (INSTALLED
OVER ALL JOINTS IN ZIP SYSTEM®
WALL SHEATHING).

OVERLAP TAPE A MINIMUM OF
1-INCH AT ALL T-JOINTS

1/8-INCH GAP RECOMMENDED AT
PANEL EDGES UNLESS
OTHERWISE PROVIDED BY
MACHINED PROFILED EDGES

FASTEN ZIP SYSTEM® WALL
SHEATHING AS REQUIRED BY
DESIGNER-OF-RECORD OR LOCAL
BUILDING CODE



DRAWING NOT TO SCALE

12-14-2007

Sales Office: 10925 David Taylor Drive - Suite 300 - Charlotte, NC 28262
Telephone: 800.933.9220 - Facsimile: 704.547.9228 - www.huberwood.com

another innovation from



ENGINEERED
WOODS

These construction details are provided to assist in the installation of ZIP System® product(s) and may not apply to every situation. Manufacturer accepts no responsibility or liability for the use of these or other construction details.