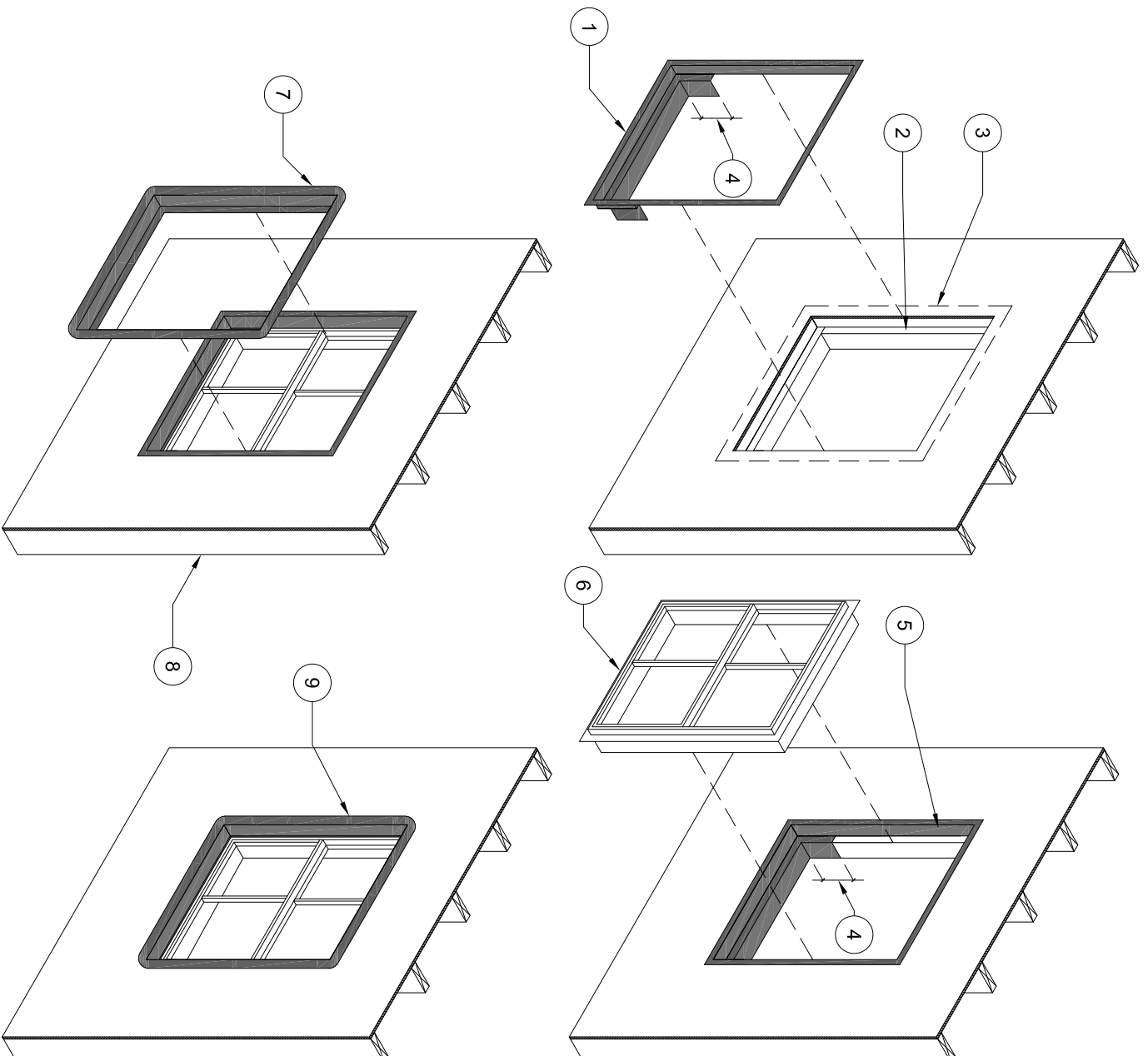


1. ZIP SYSTEM™ LIQUID FLASH.
2. 2X FRAMING INSERT TO CREATE RECESSED WINDOW.
3. ZIP SYSTEM LIQUID FLASH - A MINIMUM OF 2 INCHES OF OVERLAP ONTO THE SURFACE OF ZIP SYSTEM® SHEATHING.
4. ZIP SYSTEM™ LIQUID FLASH SHOULD EXTEND UP THE 2X FRAMING INSERT A MINIMUM OF 6 INCHES.
5. ALLOW ZIP SYSTEM™ LIQUID FLASH TO FULLY CURE BEFORE INSTALLING WINDOW.
6. TYPICAL FLANGED WINDOW. INSTALL PER WINDOW MANUFACTURER'S RECOMMENDATIONS.
7. USING ZIP SYSTEM™ LIQUID FLASH TO FLASH FROM THE WINDOW FLANGE TO THE PRE-INSTALLED, FULLY-CURED ZIP SYSTEM™ LIQUID FLASH, THE ZIP SYSTEM™ LIQUID FLASH SHOULD EXTEND ONTO THE PRE-INSTALLED, FULLY-CURED ZIP SYSTEM™ LIQUID FLASH A MINIMUM OF 2 INCHES.
8. FROM THE INTERIOR, INSTALL LOW PRESSURE POLYURETHANE FOAM BETWEEN WINDOW AND ROUGH OPENING TO MAINTAIN CONTINUITY OF THE AIR BARRIER. IF GAP IS TOO NARROW USE A COMPATIBLE CAULK SEALANT\*.
9. FULLY INSTALLED WINDOW.

\*WHEN APPLYING A SEALANT TO ZIP SYSTEM TAPE, USE A BUTYL, 100% SILICONE OR POLYURETHANE BASED SEALANT.



NTS